

Product Recovery Technology



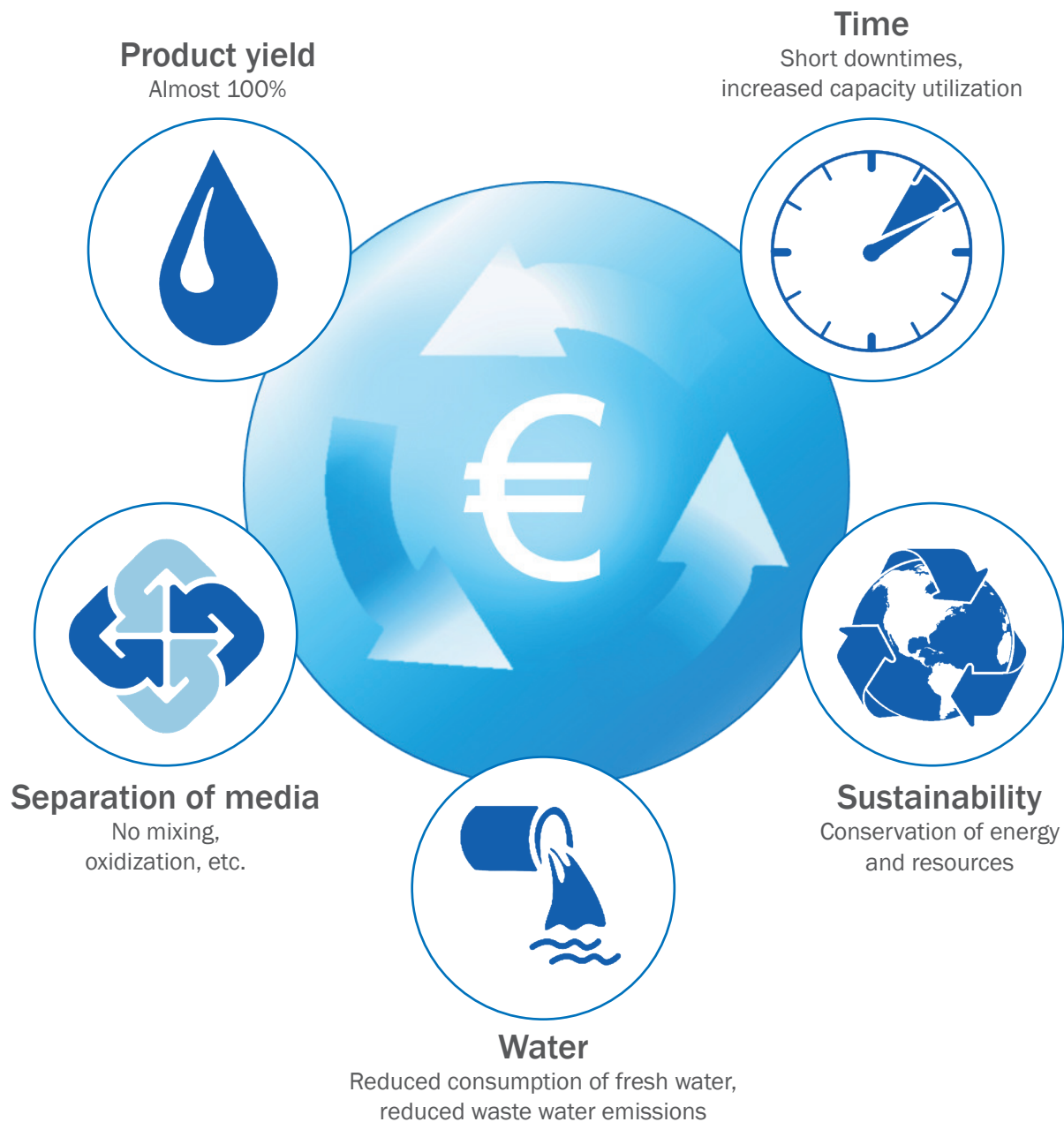
"Sustainable and efficient production"

Advantages of product recovery technology

Product recovery technology, more than any other technology, helps to exploit potential in production plants. The focus is on increased product yield and short cleaning cycles.

This increases efficiency and competitiveness, and also makes a significant contribution to environmental protection and sustainability.

In most cases, pigging systems recoup investment costs within a very short time.



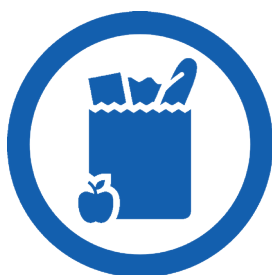
AWH Product Recovery Technology

Product recovery technology is now widespread in many industries

Product recovery technology really comes into its own when processing highly viscous or sticky products.

It is also very practical when producing a wide variety of products or smaller quantities, resulting in the need for frequent cleaning.

"Versatile fields of application"



Food and beverage industry

- Pastry and bakery products
- Dairy products
- Sweets and confectionery
- Meat processing
- Fruit/vegetable processing
- Beverage Industry

Cosmetics industry

- Soaps
- Shower gel
- Shampoo
- Creams
- Perfumes
- Toothpaste



Chemical industry

- Paint/coatings
- Cleaning agents
- Glue/Paste
- Biomass in biogas plants
- Intermediate and final products

Pharmaceutical industry

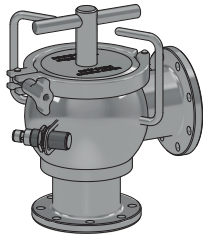
- Ointments
- Pastes
- Tinctures
- Serum



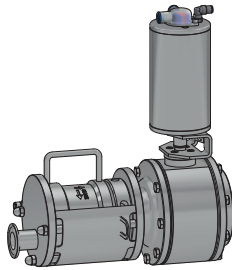
Areas of application

Modular design of a product recovery system

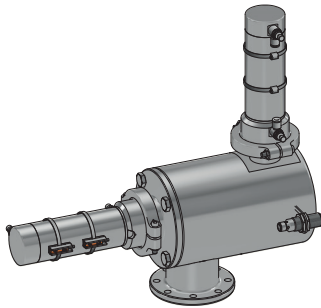
Send pig



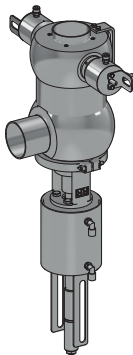
Manually operated pig station



Automatic pig station

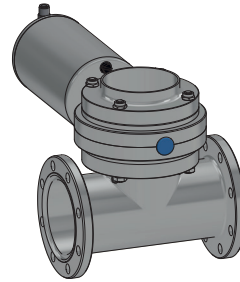


Hygienic inline station

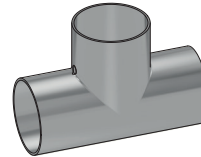


Aseptic inline station

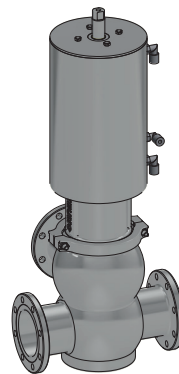
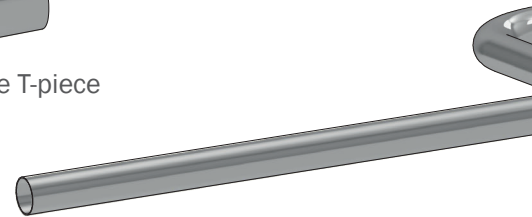
Optional product additions/



Product inlet valve



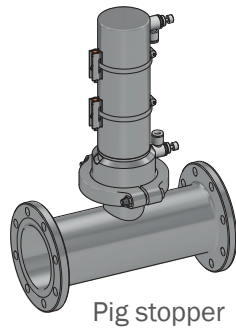
Pigging-capable T-piece



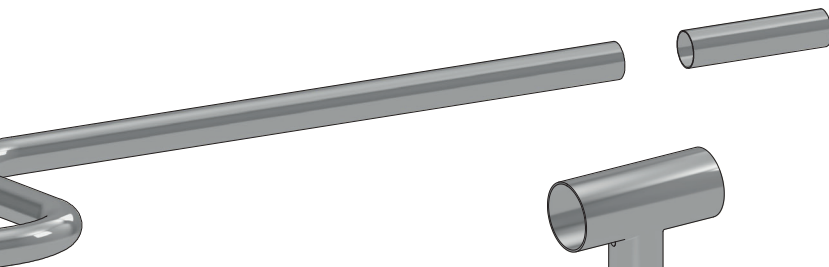
Product inlet valve

Product recovery system design

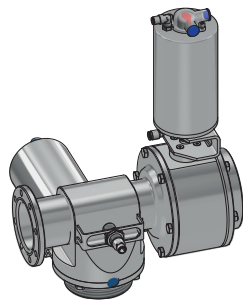
product removals



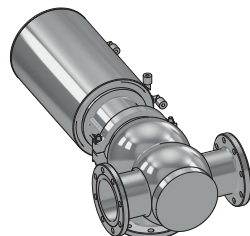
Pig stopper



Pigging-capable T-piece

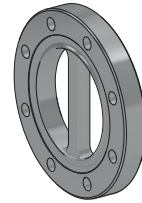


Product outlet valve

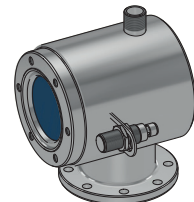


Product outlet valve

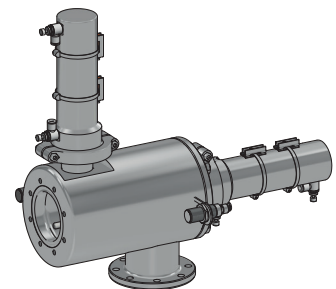
Trap pig



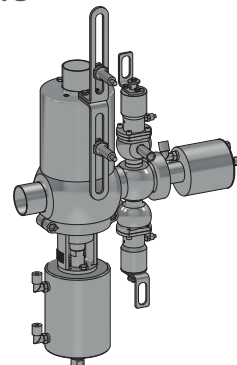
Stopper flange



Pig station



Hygienic inline station



Aseptic inline station

Product recovery system design

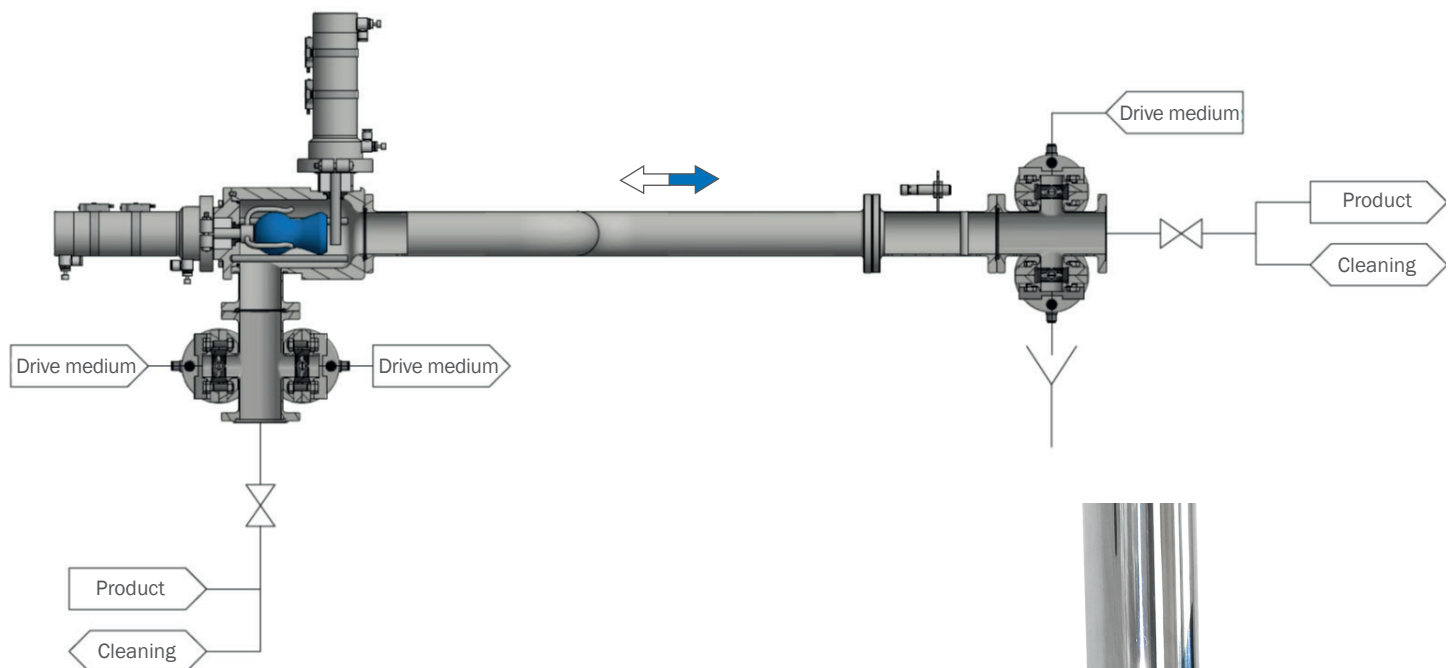
"Pipe drainage, media separation and metering"

Functionality and requirements

Functional principle

The precision-fit pig is driven through the pipeline and pushes the contents in front of it. A liquid or gaseous propellant provides the necessary energy in the form of pressure. A reliable seal between the pig and the pipeline ensures the functioning of the system. The pig slides on a film of liquid. Operation is not possible in a dry piping system.

In addition to pipe drainage, product recovery technology can also be used for media separation or metering.



Requirements

- Constant pipe diameter over the entire section to be pigged
- No bottlenecks, pipe installations, valves, reductions, obstacles
- Transition-free pipe connections aligned with each other without misalignment
- Smooth inner pipe surface



Functionality and requirements

Execution and delivery schedule

AWH offers different designs of product recovery systems.

Simply designed manually operated solutions provide a cost-effective way to get started. Automated systems ensure user convenience and process reliability. Hygienically demanding processes are met by inline and aseptic systems. These closed systems are fully integrated into the cleaning process. Additional opening for cleaning purposes is not necessary.

Both CIP and SIP processes are performed as usual and include pigging components.

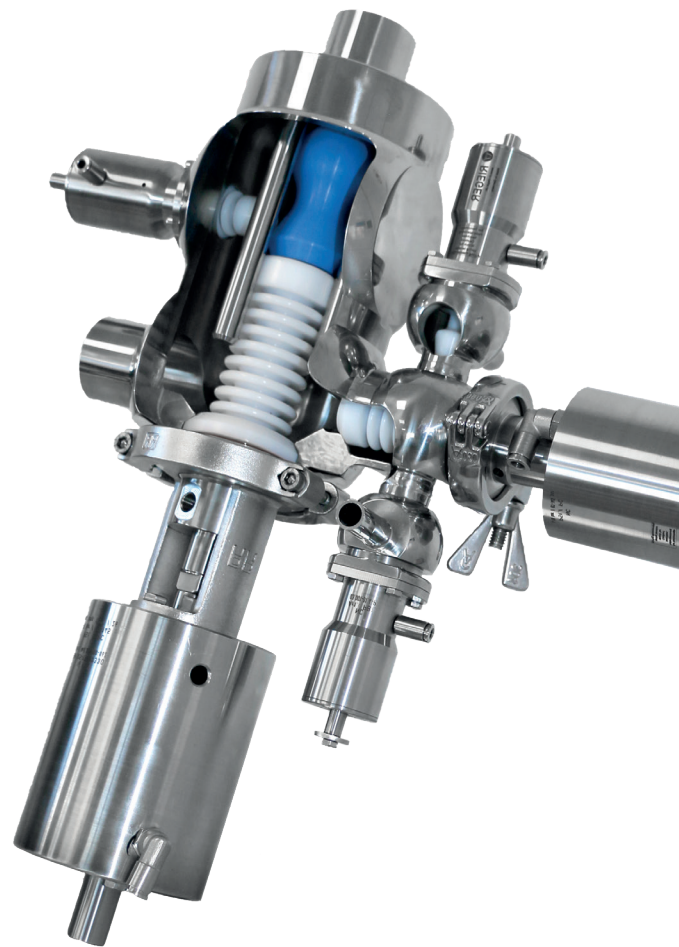
The standard delivery program includes

- Nominal sizes DN25 (1") to DN100 (4")
- Pipe standards DIN, ISO, BS, SMS, DIN2430
- Materials 1.4404/ EPDM, FKM
- Supply fittings
- Control engineering
- Sensor technology

In addition to the supply of the fittings we offer

- Assistance and advice on system setup
- Support during commissioning
- Adjustment and maintenance work

"User convenience
and process reliability"



Process recovery technology very often has to be adapted to existing plants, processes and requirements. For this reason, AWH offers a whole range of other options, such as

- Custom fitting design
- Heated components for temperature-sensitive processes
- ATEX versions
- Other sizes
- Special materials

Designs



Armaturenwerk Hötensleben GmbH
Schulstr. 5 - 6
D-39393 Hötensleben, Germany

Tel: +49 39405 92-0
Fax: +49 39405 92-111
E-mail: info@awh.eu
<http://www.awh.eu>

NEUMO Ehrenberg Group

