

CIPGuard® (TCG-ZR)

EHDG
CONFORM

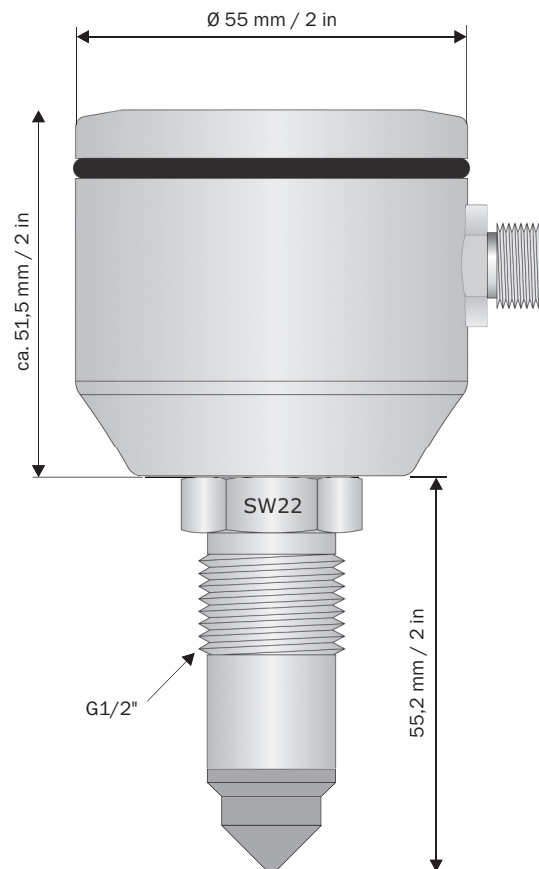
Sensor for monitoring slow-rotating 360° jet cleaners in vessels and tanks. The sensor is installed centrally, preferably on the roof of the tank, and is then integrated into the existing PLC system or queried in a mobile manner via a PC. The AWH-CIPGuard® is distinguished by a sturdy and compact design providing reliable real-time representation of the rotation of jet cleaners. The acquired measurements can be evaluated by a PLC via the digital PNP output signal (24VDC).

The necessary software can be downloaded free of charge from <http://www.awh.eu>.
The software displays the signal as three curves.

Technical Parameters

Materials:	G1/2" nozzle: 1.4404 (316L); sensor tip: PEEK; housing: 1.4301 (304)/1.4305; O-ring: EPDM
Ambient temperature:	-10 to +60 °C / 14 to 140 °F
Storage temperature:	-20 to +70 °C / -4 to 158 °F
Supply voltage:	Vb = 24 V +/-20% (18 to 32 VDC)
Current requirement:	< 20 mA
Output signal:	PNP; 50 mA; short-circuit protected; active
Rise delay time:	< 0.3 s
Reaction time:	approx. 30 s
Weight:	approx. 0.465 kg
Protection type:	IP 68
Operating pressure:	in vessel: max. 10 bar / 145 psi
Process temperature:	0 to 100 °C / 32 to 212 °F

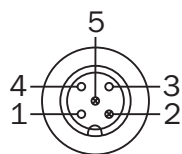
Dimensions



CIPGuard® (TCG-ZR)

Properties

Terminal connections:

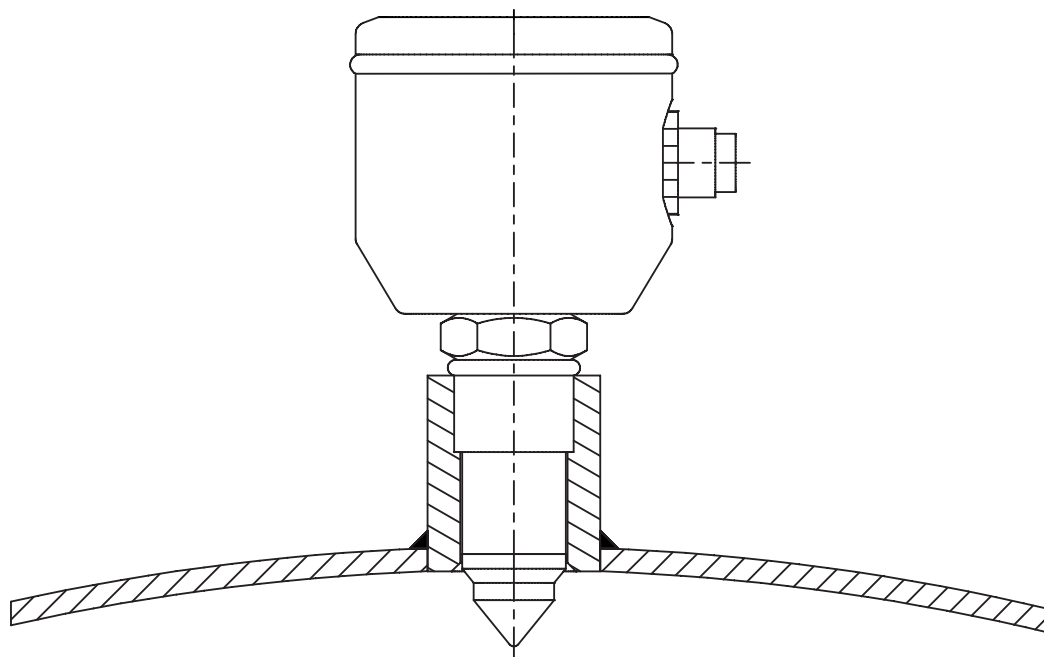


- 1 +VDC
- 2 Tx (only connectible via a prog. adapter)
- 3 GND
- 4 OUT/PNP
- 5 Rx (only connectible via a prog. adapter)

Brief Functional Description

- 1. Measurement:** Represents the jet intensity of the jet cleaner within the specified limits.
- 2. Dynamic:** Represents the curve progression proportional to the speed of rotation, meaning the higher the speed of rotation the higher the dynamic.
- 3. Output:** This curve compares the preset values from dynamic and measurement. The signal is positive when both curves lie within these limits, the value becomes negative and is displayed as an error if a value deviates for several seconds.

Installation Example



CIPGuard® (TCG-ZR M12) with sleeve for the vessel wall

Ordering Information

CIPGuard® (TCG-ZR)		
Article No.	Description	Price/EUR
68TCG-ZR-M12	TCG-ZR sensor	583.00
68TCG-CAS-PA	PC interface	203.00
68TCG-PE3-29	Weldon sleeve G1/2 inch hygienic	26.00
68TCG-ST-M12	Plugin adapter 8-pin M12	67.00
68TCG-NT-M12	Power pack on M12 plug, 2 m cable	65.00