

# AWH Clamp Brackets suitable for Clamp Connections

DIN 32676 / ISO 2852 / DIN 11853 / DIN 11864



**General**

After the flange connection, the clamp connection is probably the most commonly used detachable connection in the world. Whether with a standard clamp seal or as an aseptic O-ring connection, wherever a detachable hygienic connection is required, they are used.

AWH provides a variety of clamp brackets for various applications. From the easy-to-install three-part bracket up to a safety clamp with tilting protection, you can find additional brackets in our versatile range.

The entire AWH portfolio is manufactured exclusively in precision casting 1.4308. The locking screw is a wing nut that is very easy to clean because of its closed design and that almost completely surrounds the thread. Since clamp connections with hinges may only be used to a limited extent, the AD 2000 leaflet A5 clamp completes the portfolio.

When using clamps, the regulations, standards and rules applicable at the place of operation must be observed. Our Technical Support team will answer your questions.

**Designs**

**Heavy Duty Clamp Single Pin**

Simple design for standard applications in easily accessible pipe systems

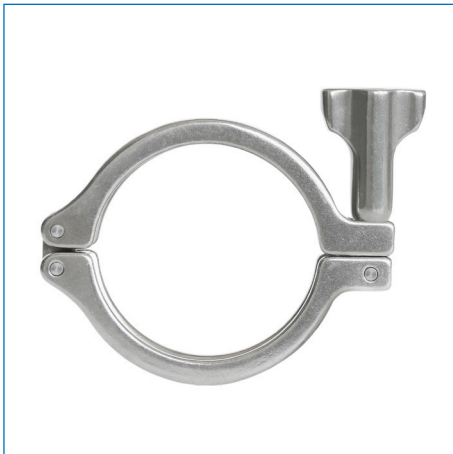


Picture similar

DN DIN	DN ISO	DN Inch	Flange (mm)	Article No.
6 - 8	10.2 - 17.2	1/2 - 3/4"	25	11110 0032
10 - 20			34	11110 0042
25 - 40	21.3 - 33.7	1 - 1 1/2"	50.5	11110 0072
50	42.4 - 48.3	2"	64	11110 0082
	60.3	2 1/2"	77.5	11110 0592
65	76.1	3"	91	11110 0092
80	88.9		106	11110 0102
100		4"	119	11110 0122
	114.3		130	11110 0852
125	139.7		155	11110 0132

### Heavy Duty Clamp Double Pin

Easy-to-install bracket with double bearing for the food industry.



Picture similar

DN DIN	DN ISO	DN Inch	Flange (mm)	Article No.
6 - 8	10.2 - 17.2	1/2 - 3/4"	25	11110 0033
10 - 20			34	11110 0043
25 - 40	21.3 - 33.7	1 - 1 1/2"	50.5	11110 0073
50	42.4 - 48.3	2"	64	11110 0083
	60.3	2 1/2"	77.5	11110 0593
65	76.1	3"	91	11110 0093
80	88.9		106	11110 0103
100		4"	119	11110 0123
	114.3		130	11110 0853
125	139.7		155	11110 0133
150	168.3	6 5/8"	183	11110 0152

### Heavy Duty Clamp 3-pieces

The 3-piece clamp is very easy to use particularly in narrowly built-up systems.



Picture similar

DN DIN	DN ISO	DN Inch	Flange(mm)	Article No.
25 - 40	21.3 - 33.7	1 - 1 1/2"	50.5	11170 0071
50	42.4 - 48.3	2"	64	11170 0081
	60.3	2 1/2"	77.5	11170 0591
65	76.1	3"	91	11170 0091
100		4"	119	11170 0121

#### General recommendations for the user:

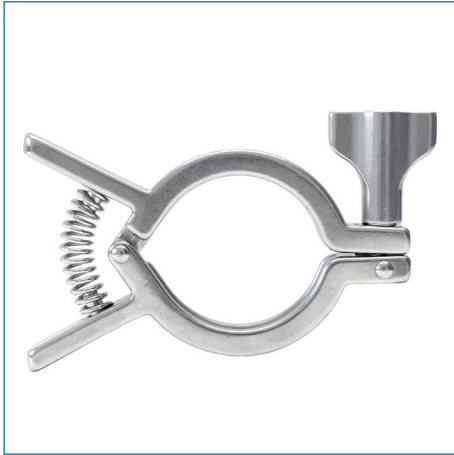
It is advisable to treat the thread of the locking bolts with an approved lubricant.

The tightening torque of the wing nut or hexagonal nut must not exceed 6–8 newton meters.

When opening the clamps, ensure that the pipelines and containers are depressurized.

**Standard Single Pin Clamp Clamp with Mounting Aid and Component Testing**

Designed for the difficult mounting on piping systems. Due to the spring clamping the "Third hand", which would normally be necessary for assembly.



Picture similar

DN DIN	DN ISO	DN Inch	Flange (mm)	Article No.
6 - 8	10.2 - 17.2	1/2 - 3/4"	25	111B0 0031
25 - 40	21.3 - 33.7	1 - 1 1/2"	50.5	111B0 0071
50	42.4 - 48.3	2"	64	111B0 0081
	60.3	2 1/2"	77.5	111B0 0591
65	76.1	3"	91	111B0 0091
80		3 1/2"	106	111B0 0101
100		4"	119	111B0 0121

**Heavy Duty Clamp 2-pieces heavy Version with Hexagon Nut for high Pressure \***

Bracket consisting of two individual shells that can be opened only with appropriate tools.



Picture similar

DN DIN	DN ISO	DN Inch	Flange (mm)	Article No.
6 - 8	10.2 - 17.2	1/2 - 3/4"	25	11160 0031
25 - 40	21.3 - 33.7	1 - 1 1/2"	50.5	11160 0071
50	42.4 - 48.3	2"	64	11160 0081
	60.3	2 1/2"	77.5	11160 0591
65	76.1	3"	91	11160 0091
100		4"	119	11160 0121
		6"	167	11160 0641
150	168.3	6 5/8"	183	11160 0151
200	219.1	8 5/8"	233.5	11160 0201
		10"	268	11160 0211
		12"	319	11160 0221

\* With this bracket it is possible to realize even higher pressures depending on the strength of the clamp connection. However, this depends on the type of connection and the nominal width. Appropriate tests may have to be carried out by the operator to determine the strength of the connection.

**Heavy Duty Clamp 2-pieces single shells with bolts and nuts according to DIN 32676**

PED 2014/68/EU, component tested acc. to EN 13445 and AD 2000 A5



DN DIN	DN ISO	DN Inch	Flange (mm)	Article No.
6 - 8	10.2 - 17.2	1/2 - 3/4"	25	11140 0031
10 - 20			34	11140 0041
25 - 40	21.3 - 33.7	1 - 1 1/2"	50,5	11140 0071
50	42.4 - 48.3	2"	64	11140 0081
		2,5"	77,5	11140 0591
65	76.1	3"	91	11140 0091
80	88.9	3,5"	106	11140 0101
100		4"	119	11140 0121
	114.3		130	11140 0141
125	139.7	5,5"	155	11140 0131
150		6 5/8"	183	11140 0151

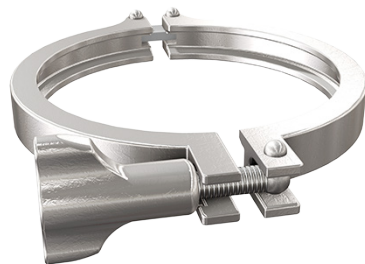
**Safety Heavy Duty Clamp Double pin with anti-tilting device**

Easy-to-install bracket with double bearing, optionally with hexagon nut.



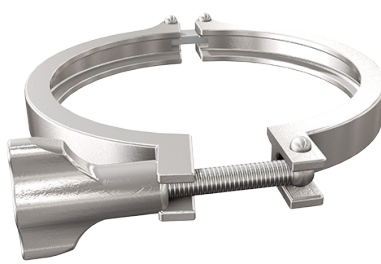
DN DIN	DN ISO	DN Inch	Flange (mm)	Article No.
6 - 8	10.2 - 17.2	1/2 - 3/4"	25	11190 0031
25 - 32	21.3 - 33.7	1 - 1 1/2"	50.5	11190 0071
50	42.4 - 48.3	2"	64	11190 0081
	60.3	2 1/2"	77.5	11190 0591
65	76.1	3"	91	11190 0091
100		4"	119	11190 0121

Picture similar



**Heavy duty clamp closed**

The specially narrowed guide on the heavy duty clamp in conjunction with the modified threaded bolt ensures that the heavy duty clamp cannot be opened as long as the profile halves are still clamped and the clamp ring connection is pressurized.



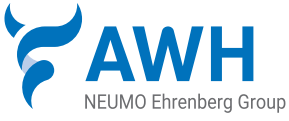
**Heavy duty clamp halfway open halfway**

The heavy duty clamp can only be removed if the wing nut is screwed on so far that the thinner part of the threaded bolt fits through the narrowed guide of the heavy duty clamp. In this condition, the profile halves are no longer clamped and the clamp ring connection is no longer pressurized.



**Heavy duty clamp open**

It is not necessary to unscrew the wing nut completely in order to open the clamp. The assembly is carried out in reverse and does not differ from that of a normal heavy duty clamp.



Armaturenwerk Hötensleben GmbH  
 Schulstr. 5-6  
 D-39393 Hötensleben

Tel: +49 39405 92-0  
 Fax: +49 39405 92-111  
 E-Mail: info@awh.eu  
 http://www.awh.eu

## NEUMO Ehrenberg Group

